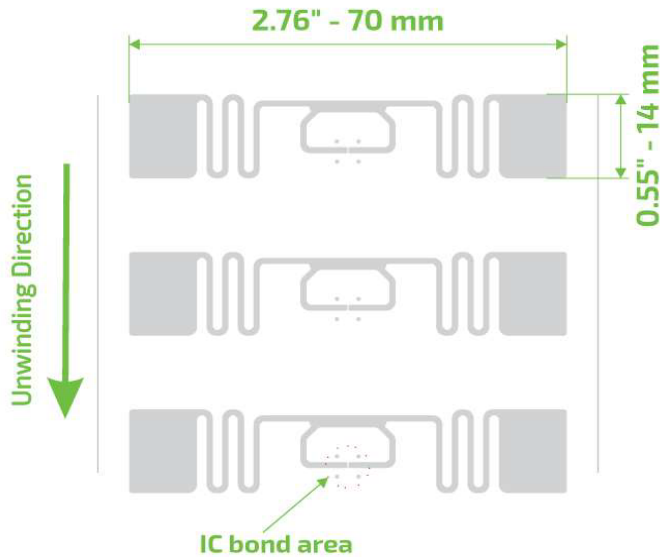


CCRR E62 70x14

UHF RFID 860 to 960 MHz

Product Design



Description

Versatile inlay, suitable for a wide range of materials: wood, plastic, cardboard, rubber, cotton tissue and denim.

Market Applications

- Demanding retail item level tagging
- Asset management
- Global operation
- Supply chain, inventory and logistics

Key Benefits

- Fast reading
- Agile counting
- Traceability
- Brand protection

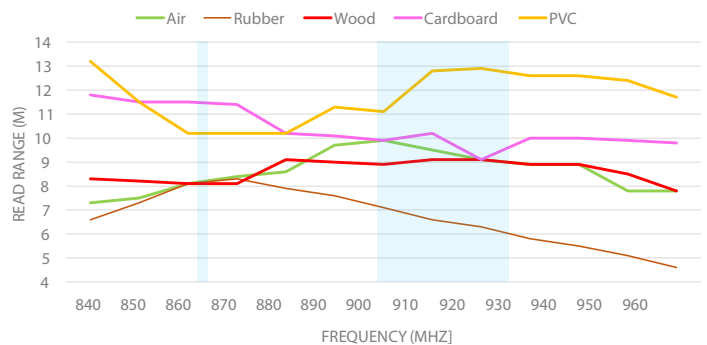
TECHNICAL SPECIFICATION			
Size	Antenna 70x14 mm		
Web	78 mm / 3.07"		
Pitch	26.307 mm / 1.036"		
Gap	12.307 mm / 0.485"		
SKU	IN00042	Inlay E62 R6	
	IN00043	Inlay E62 R6P	
	IN00107	Inlay E62 R6B	
Standards	RAIN RFID ISO 18000-63 and EPC Global Gen2v2		
Integrated Circuit	R6	TID: 96 bits	EPC: 96 bits, User: None
	R6-P	48 uniques	EPC: 128/96bits, User: 32/64 bits
	R6-B		EPC: 96 bits, User: None
Formats	Dry Inlay, Wet Inlay, Sticker Labels, and RFID tags could be developed according to the necessity		
Substrat	PET with aluminum antenna		
Roll	Qty	Max. Diameter	Core Size
Dry Inlay	22,000	< 398,8 mm / < 15,7"	76.2 mm / 3"
Thickness*	62 - 67 microns		
Temperature	-40 °C to 85°C for operation		
	-40 °C to 85/125 °C for storage		

* The thickness excludes the spacer tape.

Structure



Read range



All graphs are generated in laboratory. Real-life performance may vary. Reader power: 29 dBm. Antenna sensitivity: -70 dBm.

Angular Sensitivity

